



# Welcome to Our World

## Andro-Secure World-Wide

### Secure Transportation Presentation

Delivering affordable intelligent physical risk management & training solutions for multinational corporations operating in high-risk environments worldwide.



# Aim of This Presentation

The aim of this presentation is to demonstrate why Andro-Secure should be your preferred partner for secure transportation services. We're here to show you exactly what sets us apart in a competitive and challenging industry.

## Our Track Record

Proven success in Africa's most challenging environments and globally recognized operations

## Insurance Excellence

Coverage from the world's leading insurance houses for less than 1% of cargo value

## Proprietary Methods

Trade secrets in attention diversion, strategic planning, and operational execution

In this presentation, we'll reveal key aspects of our methodology: how we divert attention from our operations, our comprehensive planning process for secure transport activities, and what we do during active movements. Everything you'll see has been tested and refined in real-world high-risk scenarios.

# The "Low Profile" Concept

## The Foundation of Our Success

The "low profile" concept is deceptively simple yet requires extensive preparation and discipline. Our operatives blend seamlessly with local populations in ways that draw zero attention to themselves or the assets they protect and transport.

**If they don't know about you, they can't see you, speak about you, or hear about you. That's what keeps us—and you—safe.**

This approach involves significant homework and cultural research. Our teams study local behaviors, dress codes, movement patterns, and social norms. The result?

Complete operational invisibility in plain sight.



# Six Requirements for Low Profile Operations

## Mutual Support

Team members operate in coordinated pairs and groups, ensuring continuous backup and 360-degree awareness at all times

3

## Deployment Drills

Practiced, rapid response protocols for various threat scenarios, executed with precision and minimal visibility

5

## All-Round Observation

Constant environmental scanning using peripheral awareness and strategic positioning to identify threats early

## Ability to Blend

Seamless integration with surrounding environment through clothing, behavior, and cultural adaptation

4

## Equipment Preparation

All gear concealed, accessible, and ready for immediate deployment without compromising low-profile status

6

## Mental Attitude & Awareness

Heightened situational awareness combined with calm, professional demeanor that doesn't attract attention



# Blending Into the Environment

## Four Critical Focus Areas for Team Integration

01

### Dress

Clothing must authentically match local fashion, quality, and wear patterns. Our teams dress like locals, not tourists or foreigners.

03

### Weapons & Equipment

Complete concealment of firearms, communications gear, and protective equipment. Nothing visible during movement or static positions.

Each element is carefully rehearsed and evaluated before deployment. Our operatives don't just look local—they move, communicate, and operate as locals would. This comprehensive approach to blending ensures that even trained observers cannot distinguish our teams from the general population.

02

### Driving & Vehicle Movement

No observable indicators: **Speed, Space, Shape, Size, Silhouette, or Movement** patterns that distinguish our vehicles from local traffic flow

04

### Local Customs & Language

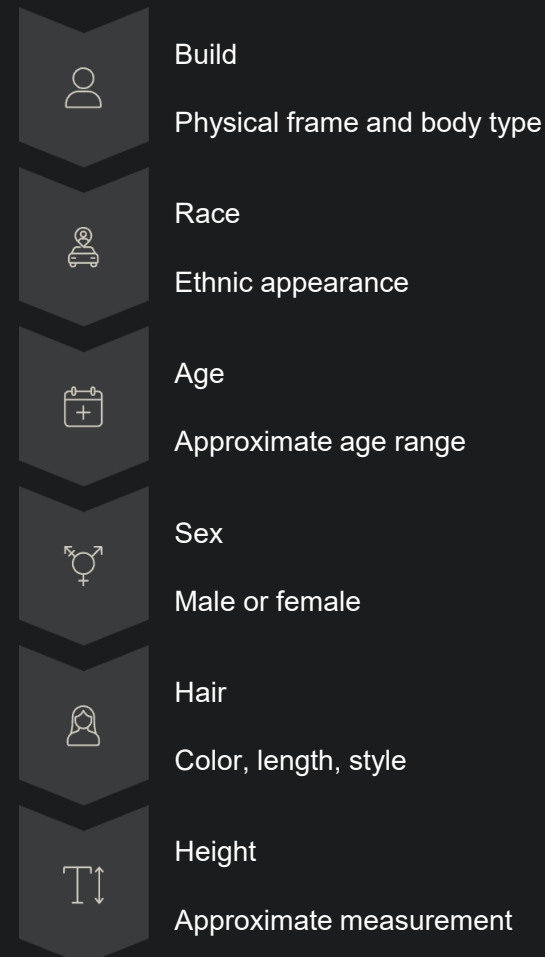
Crew members understand cultural protocols and speak at least one local language to avoid detection and handle interactions naturally



# Identifying People During Operations

## The BRASSH Method for Rapid, Accurate Identification

During low-profile operations, the team must quickly and accurately identify individuals in their environment. We use a standardized sequence that ensures consistency across all team members and enables rapid communication about potential threats or persons of interest.



☑ This systematic approach caters for all shapes and sizes, ensuring no detail is missed and descriptions are universally understood across the team.

# Identifying Vehicles During Movement

## The CMRMD System for Vehicle Recognition

Vehicle identification is equally critical during transport operations. Whether tracking potential threats, coordinating with support teams, or reporting suspicious activity, our standardized identification sequence ensures speed and accuracy across all communications.

- **Colour** Primary vehicle color and any distinctive markings
- **Make** Manufacturer brand (Toyota, Ford, Mercedes, etc.)
- **Registration** License plate number and jurisdiction
- **Model** Specific model type and year if identifiable
- **Description** Overall condition, damage, modifications, distinctive features

This universal identification system caters for all vehicle types—from motorcycles to trucks—ensuring consistent, clear communication during operations.



# Pre-Deployment Drills

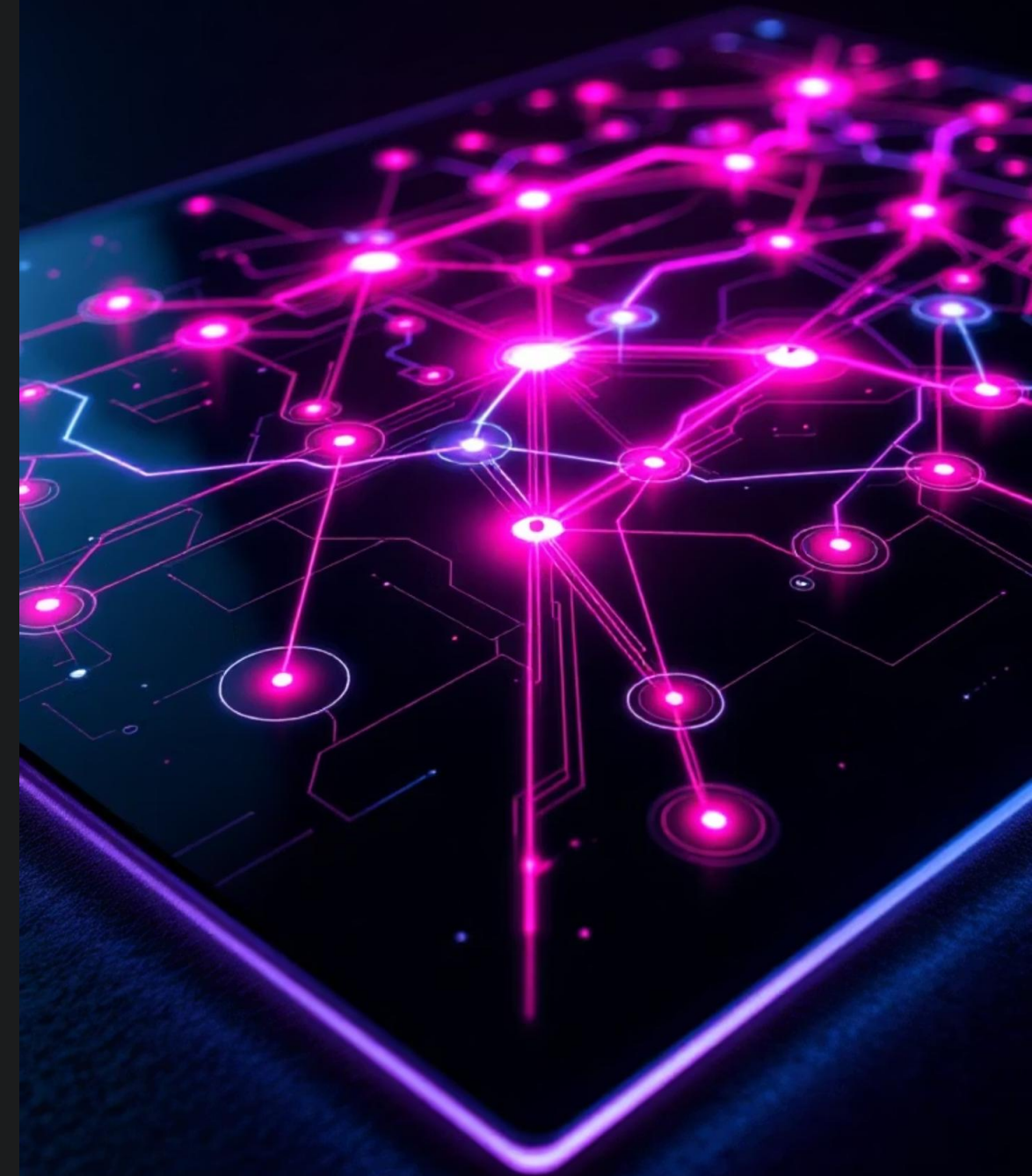
## The Foundation of Mission Success

Pre-deployment drills represent the most crucial and important phase in planning and executing successful secure transportation missions. This is where theory transforms into operational readiness, and where potential vulnerabilities are identified and eliminated.

**"Proper preparation prevents poor performance. In our business, poor performance can mean the difference between mission success and catastrophic failure."**

Whether transporting high-value cargo, sensitive materials, or VIP personnel, the quality of pre-deployment preparation directly correlates to mission success and team safety.

The following slides detail our comprehensive process for effective planning and execution of secure movements. Each step has been refined through years of real-world operations in high-threat environments.



# Map & Time Appreciation

## Strategic Route Planning and Timeline Management



### Multiple Route Planning

Team leaders utilize detailed maps to define three distinct routes with segment-based contingency planning for each phase of movement



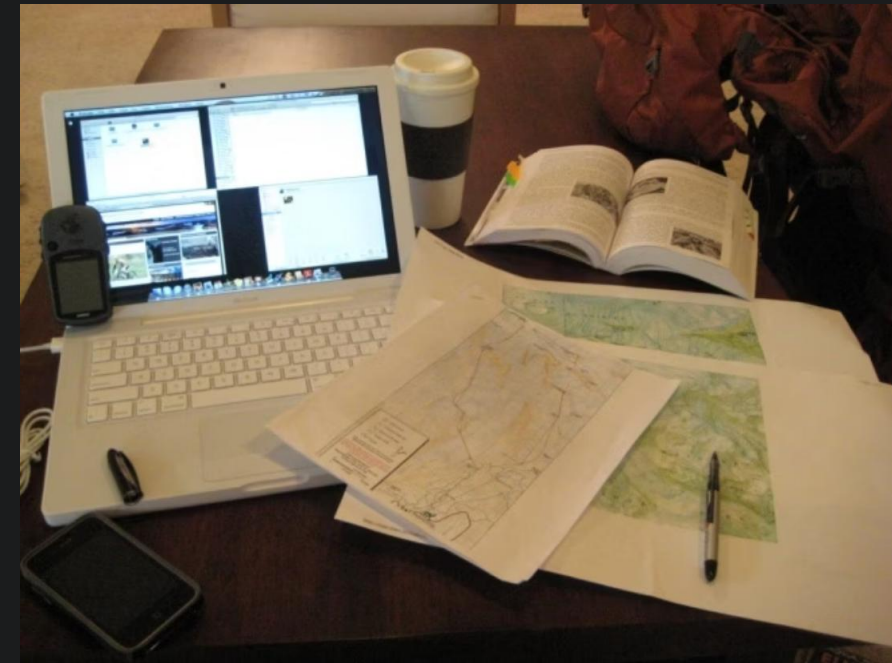
### Time & Space Analysis

Comprehensive evaluation of whether sufficient time exists to meet client ETA requirements while maintaining security protocols



### Client Communication




Team leader proactively informs client if timeline constraints cannot be safely met, proposing alternative solutions



This appreciation phase involves analyzing terrain, traffic patterns, checkpoint locations, known threat areas, and alternative routes. Digital mapping tools are combined with local intelligence to create comprehensive route packages that account for variables like time of day, weather conditions, and current threat levels.


# Issue Warning Orders to Employees

## Team Mobilization and Preparation Protocols

-  **Vehicle & Equipment Prep**  
Team inspects and prepares all vehicles, weapons, communications gear, and protective equipment to operational standards
-  **Simultaneous Actions**  
Multiple preparation activities conducted in parallel to maximize efficiency while maintaining quality control
-  **Local Team Integration**  
Special attention to ensure local team members fully understand instructions, roles, and contingency procedures



Warning orders initiate the operational tempo and set expectations for the entire team. This phase includes detailed briefings on the mission parameters, individual responsibilities, communication protocols, emergency procedures, and rally points. Each team member confirms understanding and readiness before proceeding to final deployment checks.

 Andro-Secure's proven methodology combines military precision with commercial flexibility, delivering unmatched security for your most valuable assets and personnel. Contact us to discuss your secure transportation requirements.



Proud of our heritage, proud Boers!